

宗地图

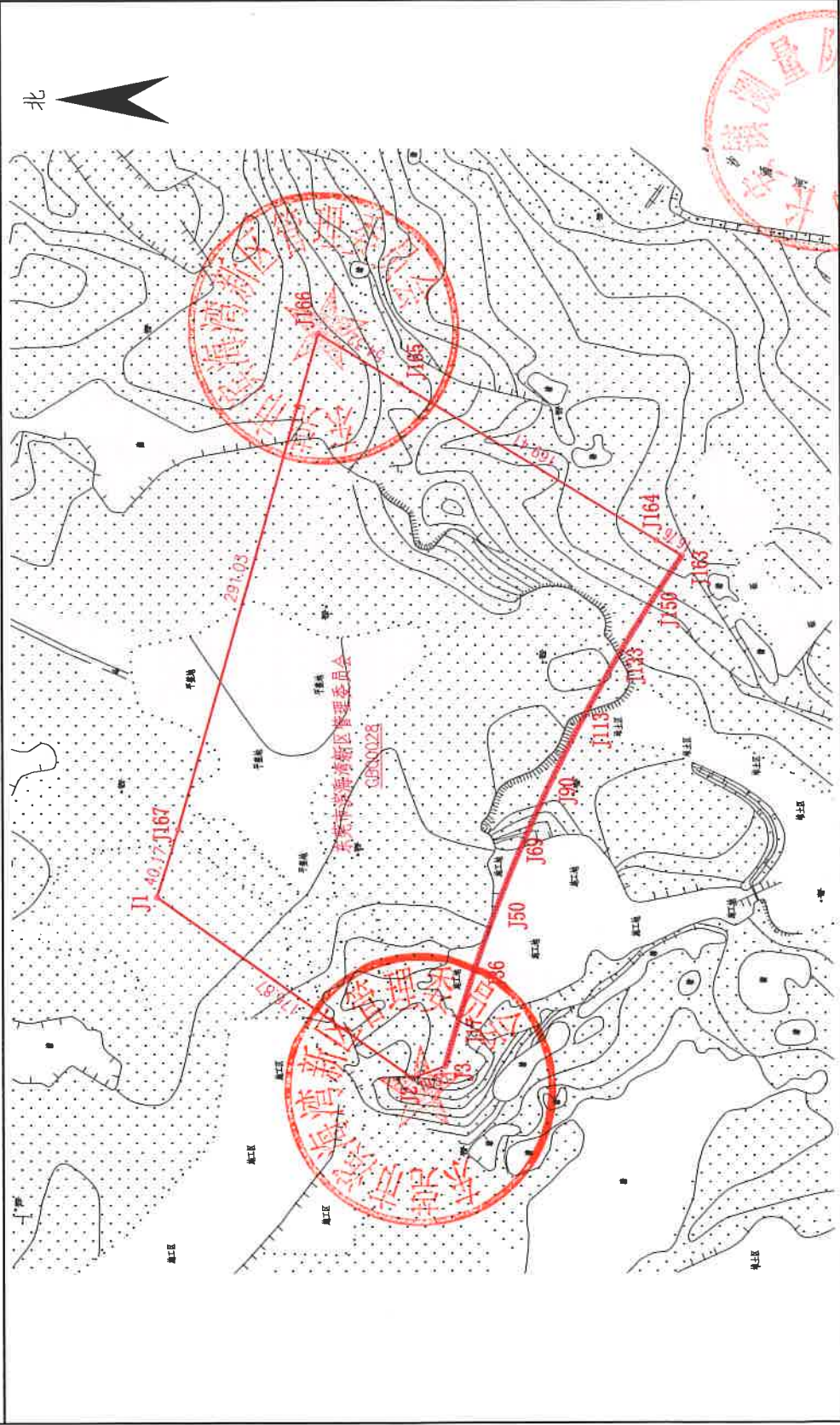
单位: m · m²

宗地编号: 441912013001GB00028

权利人: 东莞市滨海湾新区管理委员会

地籍图号: 2517.25-38472.00

宗地面积: 66656.63



绘图日期: 2019.08.16

比例尺 1:3650

审核日期: 2019.08.16

绘图员: 何家才
审核员: 黄伟基

测量单位: 东莞市长安镇测量队

界址点座标			界址点座标			界址点座标			界址点座标		
点号	座		点号	座		点号	座		点号	座	
	x (m)	y (m)		x (m)	y (m)		x (m)	y (m)		x (m)	y (m)
J1	2517354.427	38472042.024	J45	2517165.842	38472026.127	J89	2517131.312	38472106.854	J133	2517089.400	38472184.026
J2	2517210.016	38471939.994	J46	2517165.141	38472022.997	J90	2517130.441	38472108.650	J134	2517088.364	38472185.733
J3	2517191.605	38471946.489	J47	2517164.437	38472029.865	J91	2517129.555	38472110.454	J135	2517087.325	38472187.437
J4	2517191.106	38471948.288	J48	2517163.729	38472031.731	J92	2517128.686	38472112.246	J136	2517086.282	38472189.140
J5	2517190.570	38471950.221	J49	2517163.016	38472033.596	J93	2517128.802	38472114.037	J137	2517085.236	38472190.840
J6	2517190.031	38471952.143	J50	2517162.300	38472035.460	J94	2517126.915	38472115.825	J138	2517084.186	38472192.538
J7	2517189.488	38471954.054	J51	2517161.580	38472037.322	J95	2517126.024	38472117.612	J139	2517083.132	38472194.234
J8	2517188.940	38471955.984	J52	2517160.856	38472039.182	J96	2517125.130	38472119.397	J140	2517082.075	38472195.927
J9	2517188.389	38471957.903	J53	2517160.127	38472041.041	J97	2517124.231	38472121.179	J141	2517081.014	38472197.618
J10	2517187.833	38471959.820	J54	2517159.395	38472042.754	J98	2517123.329	38472122.960	J142	2517079.950	38472199.307
J11	2517187.274	38471961.737	J55	2517158.659	38472044.754	J99	2517122.423	38472124.739	J143	2517078.881	38472200.994
J12	2517186.710	38471963.652	J56	2517157.919	38472046.608	J100	2517121.513	38472126.516	J144	2517077.810	38472202.679
J13	2517186.142	38471965.566	J57	2517157.175	38472048.461	J101	2517120.600	38472128.292	J145	2517076.735	38472204.361
J14	2517185.570	38471967.479	J58	2517156.428	38472050.312	J102	2517119.682	38472130.065	J146	2517075.656	38472206.040
J15	2517184.994	38471969.390	J59	2517155.676	38472052.162	J103	2517118.761	38472131.836	J147	2517074.573	38472207.718
J16	2517184.414	38471971.301	J60	2517154.920	38472054.009	J104	2517117.837	38472133.605	J148	2517073.488	38472209.393
J17	2517183.830	38471973.210	J61	2517154.160	38472055.856	J105	2517116.908	38472135.373	J149	2517072.398	38472211.066
J18	2517183.242	38471975.118	J62	2517153.397	38472057.700	J106	2517115.976	38472137.138	J150	2517071.305	38472212.737
J19	2517182.650	38471977.024	J63	2517152.629	38472059.543	J107	2517115.040	38472138.901	J151	2517070.209	38472214.405
J20	2517182.054	38471978.929	J64	2517151.858	38472061.385	J108	2517114.100	38472140.663	J152	2517069.108	38472216.071
J21	2517181.454	38471980.833	J65	2517151.083	38472063.224	J109	2517113.156	38472142.422	J153	2517068.005	38472217.735
J22	2517180.849	38471982.736	J66	2517150.304	38472065.062	J110	2517112.209	38472144.179	J154	2517066.898	38472219.395
J23	2517180.241	38471984.638	J67	2517149.520	38472066.899	J111	2517111.258	38472145.935	J155	2517065.787	38472221.055
J24	2517179.629	38471986.538	J68	2517148.733	38472068.734	J112	2517110.303	38472147.688	J156	2517064.673	38472222.712
J25	2517179.012	38471988.437	J69	2517147.943	38472070.567	J113	2517109.345	38472149.439	J157	2517063.555	38472224.366
J26	2517178.392	38471990.334	J70	2517147.148	38472072.398	J114	2517108.382	38472151.189	J158	2517062.434	38472226.018
J27	2517177.767	38471992.231	J71	2517146.349	38472074.228	J115	2517107.416	38472152.936	J159	2517061.309	38472227.667
J28	2517177.139	38471994.125	J72	2517145.547	38472076.056	J116	2517106.447	38472154.681	J160	2517060.181	38472229.314
J29	2517176.507	38471996.019	J73	2517144.740	38472077.882	J117	2517105.473	38472156.424	J161	2517059.049	38472230.959
J30	2517175.870	38471997.911	J74	2517143.930	38472079.707	J118	2517104.496	38472158.165	J162	2517057.914	38472232.601
J31	2517175.229	38471999.802	J75	2517143.116	38472081.530	J119	2517103.516	38472159.904	J163	2517056.775	38472234.240
J32	2517174.585	38472001.692	J76	2517142.298	38472083.351	J120	2517102.531	38472161.641	J164	2517071.054	38472235.005
J33	2517173.936	38472003.580	J77	2517141.476	38472085.170	J121	2517101.543	38472163.375	J165	2517215.472	38472233.580
J34	2517173.284	38472005.466	J78	2517140.650	38472086.988	J122	2517100.551	38472165.108	J166	2517261.779	38472235.983
J35	2517172.627	38472007.352	J79	2517139.820	38472088.804	J123	2517099.556	38472166.839	J167	2517342.194	38472080.284
J36	2517171.967	38472009.236	J80	2517138.987	38472090.618	J124	2517098.557	38472168.567			
J37	2517171.302	38472011.118	J81	2517138.149	38472092.430	J125	2517097.554	38472170.293			
J38	2517170.634	38472013.000	J82	2517137.308	38472094.241	J126	2517096.548	38472172.017			
J39	2517169.961	38472014.879	J83	2517136.463	38472096.049	J127	2517095.537	38472173.739			
J40	2517169.284	38472016.758	J84	2517135.614	38472097.856	J128	2517094.524	38472175.459			
J41	2517168.604	38472018.634	J85	2517134.762	38472099.661	J129	2517093.506	38472177.177			
J42	2517167.919	38472020.510	J86	2517133.905	38472092.465	J130	2517092.485	38472178.893			
J43	2517167.231	38472022.384	J87	2517133.045	38472103.266	J131	2517091.460	38472180.606			
J44	2517166.538	38472024.256	J88	2517132.180	38472105.066	J132	2517090.432	38472182.317			

地块位置略图

